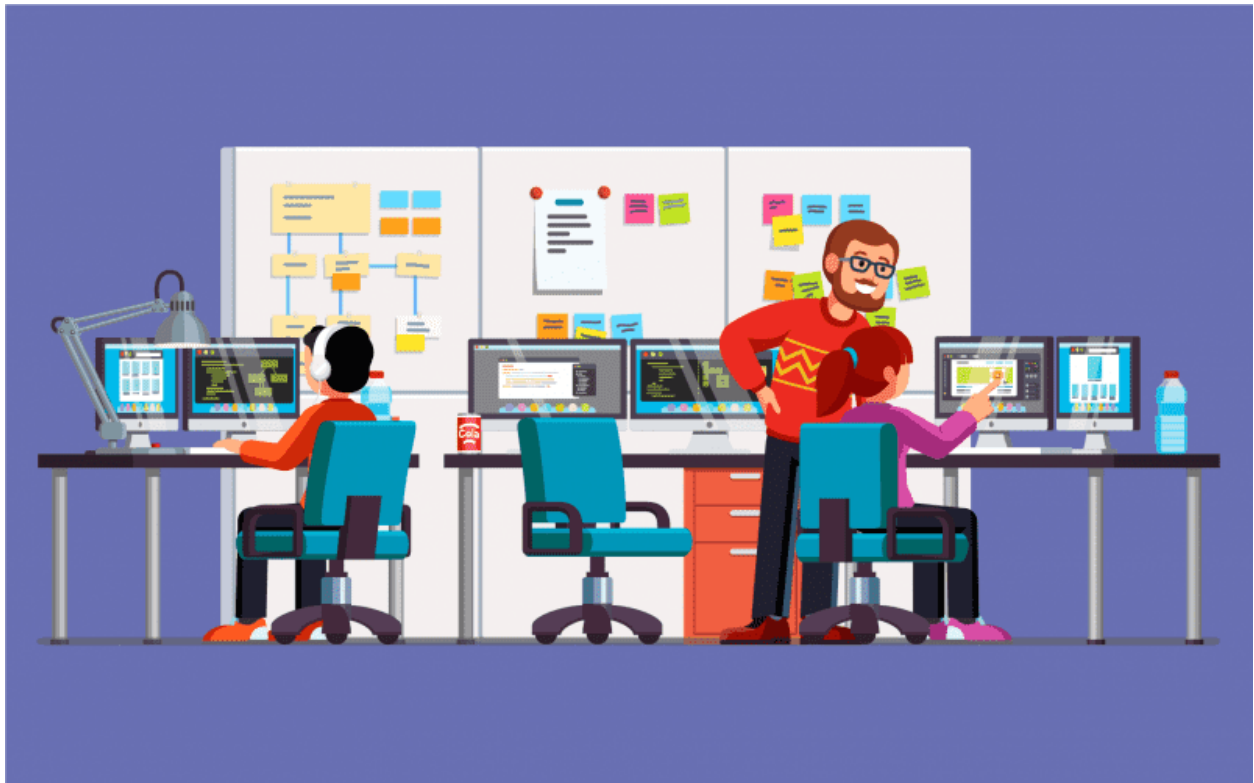


Mtech vs MS: Which is a Better Choice?



Earning a master's degree has become the need of the hour, it not only helps you attain detailed knowledge in a particular field but also uplifts your profile. Considering the importance of postgraduate courses in the lives of students, there are innumerable options available for learners. But with a plethora of choices, choosing the right one has become a daunting task. Mtech and MS both are popular picks of science stream graduates. How will you pick one out of these two? For all those who are going through a similar conundrum, here is a blog that aims to shed light on various pointers which will help you shortlist between Mtech vs MS.

THIS BLOG INCLUDES:

1. Mtech vs MS: General Comparison
2. MTech Vs MS: Which One to Choose?

1. Course Overview
2. Specializations: Mtech vs MS
3. Entrance Exams
4. Career Scope: Mtech vs MS
3. MTech in India vs MS in the USA
4. Mtech vs MS vs MBA
5. FAQs

[MS in Canada](#)[MS in Ireland](#)[MS in UK](#)

Mtech vs MS: General Comparison

As conveyed by the name, M tech will take you on a tour of the world of Technology. The curriculum is designed to facilitate more industry-specific needs. It will equip you with various latest advancements in your chosen field. On the other hand, if you want to delve deeper into the domain of science and research then MS would be a better option for you. Mentioned below are the general pointers with elucidating differences between Mtech vs MS:

Parameters	Mtech	MS
Name of the Program	Master of Technology	Master of Science
Duration	2 years	1 to 2 years
Course Structure	It is a technical course with more practical applications	The course is more theoretical and research-based

Entrance Exam	GATE (India)GRE (Abroad)	GATE (India)GRE (Abroad)
Curriculum	The curriculum will revolve around the technical application of the chosen specialization	The curriculum will be related to theoretical aspects of the specialization opted along with research opportunities
Specializations	Non-medical specializations such as Computer Science, Mechanical, Electronics etc	Medical as well as Non-Medical options such as Biological, Chemistry, Physics etc
Higher Studies	Doctorate	Doctorate
Scope	Generally, Candidates pursue full-time jobs	Candidates are more into pursuing their research

MS in India *MS in USA*

MTech Vs MS: Which One to Choose?

Both programs are open to students who have studied the science stream subjects. Being popular options after BTech and BSc courses, both the programs have several varied aspects, especially in the terms of their focus. Mtech is a technical course with various engineering specializations on offer whereas MS is more theory specific elucidating research options. Let us go through some important points of difference regarding MTech vs MS:

Course Overview

If you are looking for an option which will furnish you for a technical role in the industry, then pursuing MTech will be a better option. MTech will enable you to specialize under the chosen branch of engineering. On the other hand, MS will be a treat for the ones wanting to learn core scientific knowledge of the field. A majority of universities in India offer MTech under a wide variety of specializations but MS is not that popular course in the country, instead, it is offered in the form of MSc. On the contrary, you may encounter limited MTech programs abroad as MS is offered prominently.

Top Mtech Courses Mtech Courses for Working Professionals

Specializations: Mtech vs MS

For those wanting to secure an MTech degree, an array of options in technology-oriented Non-Medical fields are available. Often students opt for a similar field in MTech as that of their bachelor's degree (BTech). Some frequently opted MTech specialization are: Civil Engineering, Mechanical Engineering, Information and Technology Engineering, etc. Whilst the MS course can be pursued in medical and non-medical branches such as Chemistry, Biology, Computer Science, Artificial Intelligence etc.

Entrance Exams

To all the dexterous students aspiring to earn a degree in MTech or MS have to qualify competitive exams in order to secure admission. Any study destination, whether in India or Abroad, would require you to present high scores in entrance exams to secure your seat in the field of your choice. In India, you will have to qualify the GATE exam for both

the courses, though some institutions may accept GRE for MS. Universities abroad would accept GRE scores for both the courses.

MS in Computer Science in Germany MS in Civil Engineering in Canada

Career Scope: Mtech vs MS

Since both the programs have different approaches in the field of science, thus, you can target various industries after earning a degree in your dream course. Oftentimes Mtech graduates are picked up by leading organisations or IT companies for high profile technical roles. MS graduates are often placed in R&D companies. Also, the field of research stands open for MS students.



MS v/s MTech

Which one better ?

Placement after MS ?

Dr. Vijayender

YouTube: YourPedia Education

MTech in India vs MS in the USA

Here we are going to look at a few things that will help you in making a choice.



YouTube: MAD- Make a Difference

Particulars	M.Tech (India)	MS (USA)
Level	Post Graduation	Post Graduation
Duration	2 years (4 semesters)	1 – 2 years

Eligibility	Must be a graduate in BTech/ BE	3.0 GPA on a scale of 4.0 GPA
Fees Structure	INR 50K – 2 Lakhs	13K – 141K USD
Entrance Exams	GATE TANCET OJEE BHU PET AP PGECET UPSEE Other Mtech entrance exams	IELTS – 6.5 -7.5 TOEFL– 87 – 102 GRE– 292 – 328
Career Paths	Senior Engineer, Project Manager, Researcher, Technical Consultant, Technical Scientist, Account Manager, etc.	Top Recruiting Companies -Amazon, Facebook, Google, Cognizant, Cisco System, Booz, Allen & Hamilton Group, etc.
Average Salary	INR 3 – 6 LPA	64,111/USD

Mtech vs MS vs MBA

Mtech or MS or MBA degree, basically the choice boils down to one thing – What do you want to do in life?

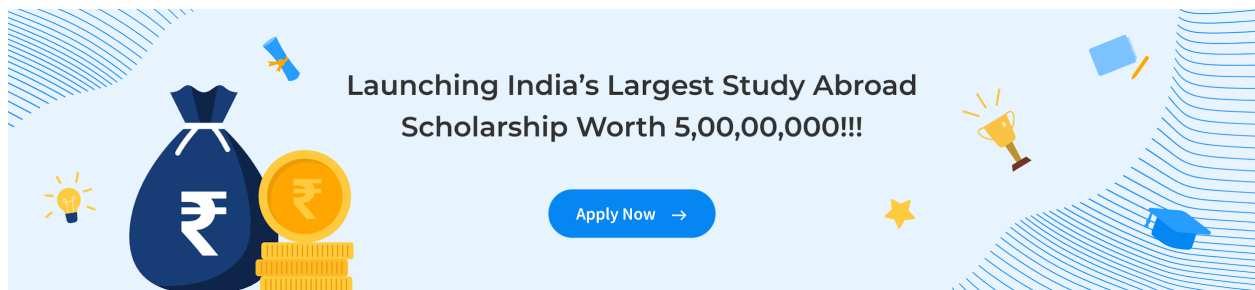
If a candidate or student is keen on engineering, technical procedures & research-oriented jobs an MS or MTech degree is perfect for them. There are a lot of reputed specialized courses in this like computer finance, computational linguistics, computer science & engineering, mechanical engineering, chemical engineering, environmental engineering, etc.

Although an MS. Mtech degree would get you in reputed companies or research-based institutes but the hard truth is there is a demand for professionals with MBA degrees from reputed B-schools.

MBA is a global course that focuses on management orientation in various aspects like Finance, Marketing, Human Resource Management, International Business, etc. There are also a handful of opportunities for those who are in the corporate world & are willing to climb up the corporate ladder fast.

Job Prospects for MS/MTech	Job Prospects for MBA
Junior or Senior Engineer	Banking & Finance
Technical Consultant	Information System Management
Project Manager	Management Consulting
Research Scientist	Data Analytics
Project Associate	Entrepreneurship

FAQs



Is MS or MTech better?

The theoretical difference between MS and Mtech is the course duration. An MS can go beyond 2 years as well if the candidate is working on a particular research project.

Mtech is usually 2 years long in duration. The course content of both degrees is more or less the same. MS is more diverse in terms of offering specializations than Mtech. |

Is MS degree equivalent to M Tech?

Equivalency depends on the subjects covered under the degree. For example, an MS in Electrical Engineering can be equivalent to Mtech Electrical Engineering provided the core subjects and curriculum of the course work is same.

Can MS be done after MTech?

One can do MS after Mtech provided they clear the admission requirements of the university they are seeking admission.

What is the difference between MS and MSc?

MS is a much more diverse degree with a wide range of specializations. It is also considered as a more practical course in comparison to MSc.

MEng vs MSGATE vs GRE

Hopefully, this blog solved your Mtech vs MS dilemma. Are you still confused about which course to opt for? Don't worry, Leverage Edu is here to guide you! Reach out to us and get rid of all your career confusion!